



# J2035

## HIGHLY PORTABLE JAW CRUSHER

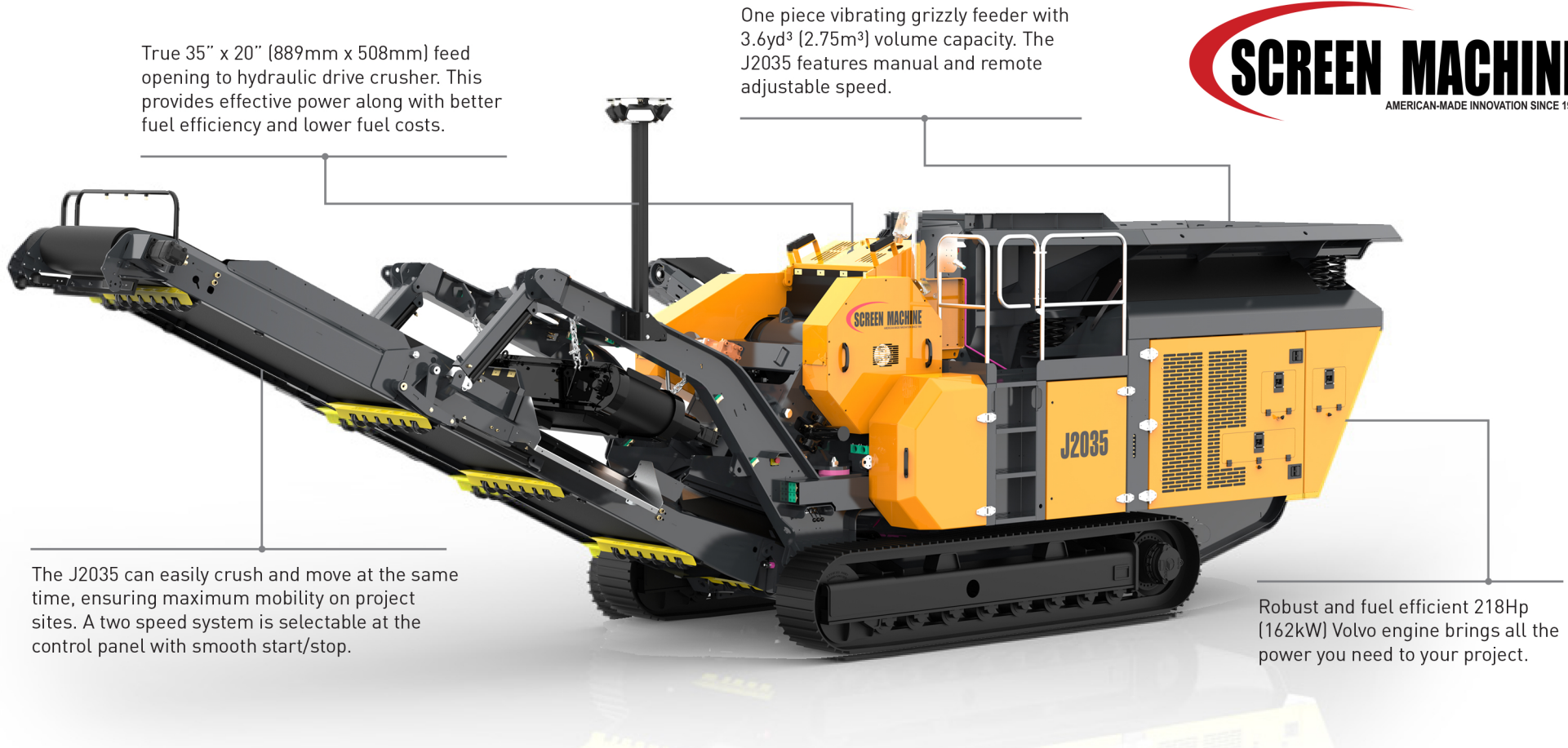
The SMI J2035 compact jaw crusher is the perfect solution for projects with small footprints but big requirements.

This versatile, mobile crusher is nimble in small spaces, and can continue moving while crushing. The J2035's small footprint is uniquely suited to demolition; recycling; aggregates and smaller scale construction projects. Less than 98" (2.5m) wide, the crushers can be transported easily from site to site.

This new product boasts flexibility, it can convert to a recirculating jaw crusher in under one hour, when purchased with Recric Option.

### Features & Benefits

- 890mm (35") x 500 (20") single toggle jaw
- Crawler Tracks
- Integrated hydraulic folding stockpiling conveyors
- I-beam plate fabricated chassis construction
- Open chassis design for ease of maintenance
- Fast setup time



True 35" x 20" (889mm x 508mm) feed opening to hydraulic drive crusher. This provides effective power along with better fuel efficiency and lower fuel costs.

One piece vibrating grizzly feeder with 3.6yd<sup>3</sup> (2.75m<sup>3</sup>) volume capacity. The J2035 features manual and remote adjustable speed.

The J2035 can easily crush and move at the same time, ensuring maximum mobility on project sites. A two speed system is selectable at the control panel with smooth start/stop.

Robust and fuel efficient 218Hp (162kW) Volvo engine brings all the power you need to your project.

## PERFORMANCE SPECIFICATION\* \* Depending on application

<b>Engine</b>	<b>Weight - w/ magnet &amp; side conveyor</b>
218 Hp (162 kW)	23,850kg (52,580 lbs)
<b>Crushing Chamber</b>	<b>Production Rate*</b>
35" (889mm) wide x 20" (508mm) pitman opening	up to 110 TPH

## DIMENSION SPECIFICATION\* \* Depending on material density and set-up

TRANSPORT DIMENSIONS		
Height	Width	Length
9' 9" (2.98m)	8' 2" (2.49m)	30' 7" (9.32m)
CONVEYOR STOCKPILE HEIGHT		
Main	Side	
9' 10" (3.0m)	8' 6" (2.58m)	